



GeoVax Labs, Inc. is a clinical stage biotechnology company developing innovative vaccines and immunotherapies against infectious diseases and cancer using novel proprietary platforms.

Our Mission

Improve lives worldwide by providing vaccines and therapies preventing / treating the world's most challenging infectious diseases and cancers.

High-Value Pipeline

Pipeline evaluating targets focused on multiple forms of cancer, COVID-19, Mpox/smallpox, and other infectious diseases.

Expert Team

- Proven track record of success
- History of significant shareholder value creation + successful exits.
- Successfully developed multiple therapeutics globally, from early stage clinical to approval and commercialization

Corporate Presentation



Serving Humanity Through Innovations in Immunology

NASDAQ: GOVX

Market Cap: \$13.8m

Recent Stock Price: \$1.00

Shares Outstanding: 13.8m

Data as of 4/29/2025

Investment Highlights

Overview



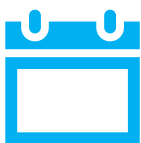
- Catalyst rich pipeline** with multiple opportunities to create meaningful shareholder value.
- Clinical programs** in Oncology, COVID-19, and Mpox/smallpox.
- Robust intellectual property portfolio with **over 130 patents** across 23 different families.

Lead Clinical Programs



- Gedepin®**: Cancer immunotherapy with FDA Orphan Drug status preparing for Phase 2 trial in head and neck cancer.
- GEO-CM04S1**: COVID-19 vaccine with Phase 2b clinical trial preparations underway. \$30B+ market potential.
- GEO-MVA**: Mpox/smallpox vaccine with clinical evaluation expected to initiate in 2H 2025.

Upcoming Milestones



- 2H25**: Final results evaluating GEO-CM04S1 booster in healthy adults.
- 2H25**: Clinical evaluation of GEO-MVA, vaccine candidate against Mpox/smallpox expected to initiate.
- YE25**: Completion of Phase 2 GEO-CM04S1 clinical trial in chronic lymphocytic leukemia (CLL) patients.

GeoVax's MVA platform drives durable, broad -spectrum immunity through multi-antigen constructs that activate both antibody and T cell responses. This dual-acting approach targets high -need populations and hard -to-treat diseases, positioning the platform for scalable impact across infectious disease and oncology markets with significant unmet demand. Gedepin® technology addresses solid tumor cancers utilizing gene directed prodrug therapy.

Market Potential & Significant Medical Need



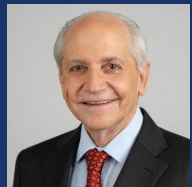
Leadership



David Dodd
Chairman President & CEO



Mark Reynolds
CFO



Kelly McKee, MD, MPH
CMO



Mark Newman, PhD
CSO



Valerie Montgomery Rice, MD
President, CEO
Morehouse School of Medicine
Advisor to CEO and BOD

Investor Contact:

Precision AQ
geovax@precisionaq.com

Partnership Contact:

John Sharkey, PhD
VP, Business Development
jsharkey@geovax.com

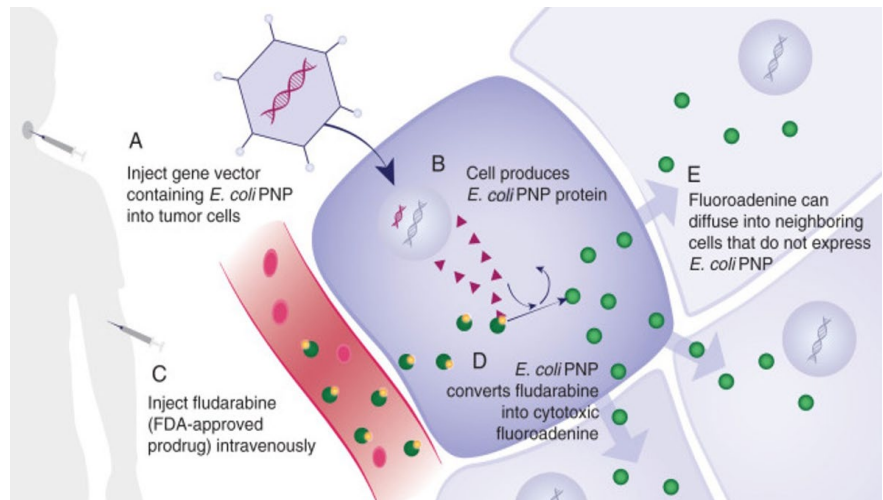


Advancing a Novel Pipeline in High -Value Areas

Initial Targets	Preclinical	Phase 1	Phase 2
COVID-19 GEO-CM04S1			
Head & Neck Cancer Gedepin®			
Mpox/smallpox GEO-MVA			

Gedepin® Demonstrates Safe Antitumor Activity

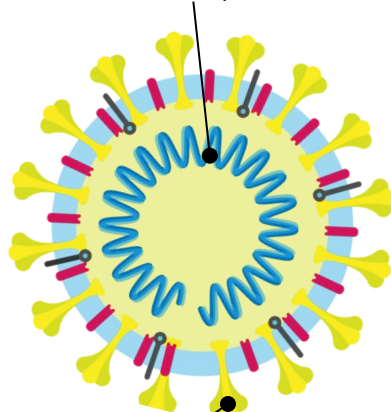
- Unprecedented level of tumor cell-killing activity
- Novel tumor killing mechanism
- Facilitates destruction of refractor solid tumors
- "Tumor agnostic"



Importance of Antibodies & T -cells for Protection

Both humoral (antibody) and cellular (Tcell) immune responses contribute to protection against SARS-CoV-2. "+" signs denote the relative importance of antibodies and Tcells for protection at each stage of disease severity, with more "+" signs indicating greater importance/protection.

Nucleocapsid (N) Protein
Induces T-cell Response



Spike (S) Protein
Induces Antibody Response

Immune Responses for Protection against Severe Acute Respiratory Syndrome Coronavirus 2 (SARS-CoV-2)

	Antibodies	T Cells
Asymptomatic Infection	++++	+
Symptomatic Infection	+++	++
Severe Disease, Hospitalization	++	++++
Death	++	++++

COVID-19 Disease Severity